


imagePROGRAF Direct Print & Share Guide

1. Features of imagePROGRAF Direct Print & Share

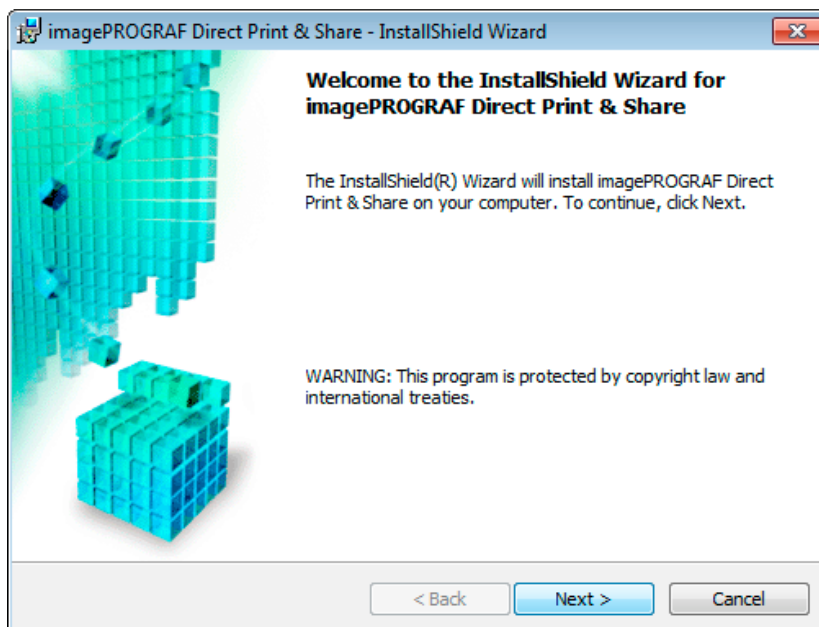
The features of imagePROGRAF Direct Print & Share are as follows.

- Note that "imagePROGRAF Direct Print & Share" is referred to as "Direct Print & Share" in this manual.
 - 1. You can print your PDF documents and drawings or JPEG and TIFF images directly, without opening each application.
 - Encrypted PDF are not supported.
 - 2. You can confirm the print layout by using the preview. Also, you can make print settings without opening up driver properties.
 - 3. Since it is possible to print multiple files at the same time, you can efficiently print a large number of drawings and images.
 - 4. Direct Print & Share allows you to access cloud storage, upload and download files, and print the files.
 - Cloud storage is compatible with "Google Drive".
 - To use the cloud service, you first have to create an account for the cloud service.
 - Printers that can print from Direct Print & Share are Canon imagePROGRAF series printers.
 - 5. You can share files with other users after uploading them to cloud storage. E-mail notifications are sent to users to share files at the same time uploads are made.
 - Although it is not possible to preview or print file types other than PDF, JPEG, and TIFF, you can still upload them to cloud storage.
 - 6. By using a plug-in, drawings made in Autodesk AutoCAD are automatically registered to the Direct Print & Share file list. Direct Print & Share makes it easy to print the drawings you made as well as share them with other users through cloud storage.
-
- For details on how to use Direct Print & Share, refer to the Help.
 - Read the Readme file for cautions regarding using Direct Print & Share. Click the  icon in the top left of the main window, then open the About imagePROGRAF Direct Print & Share dialog box from the menu and click Readme to display the Readme file.

2. INSTALLATION PROCEDURE

The procedure for installing Direct Print & Share is as follows.

1. Unpack the downloaded file.
2. Run ipfdps32_1.0.0_setup.exe in 32-bit Windows systems or ipfdps64_1.0.0_setup.exe in 64-bit Windows systems.
3. The installer starts.
Click the **Next** button.

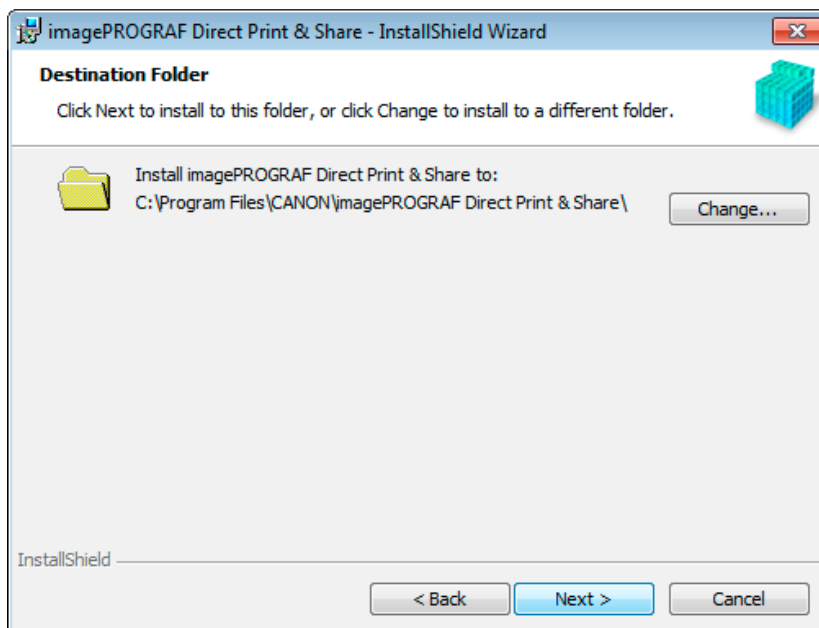


4. The **License Agreement** is displayed.
Select **I accept the terms in the license agreement** and then click the **Next** button.

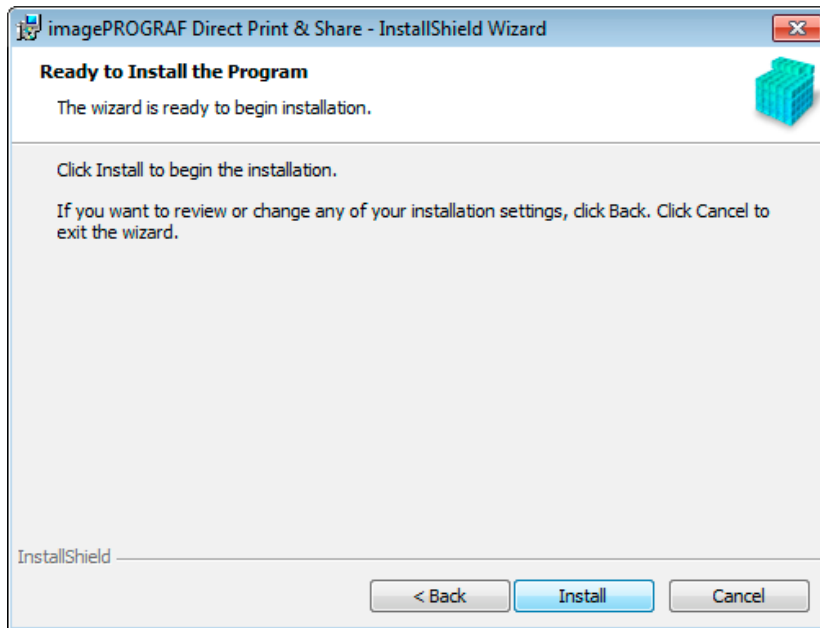


5. The **Destination Folder** is displayed.

Specify the installation destination and click the **Next** button.

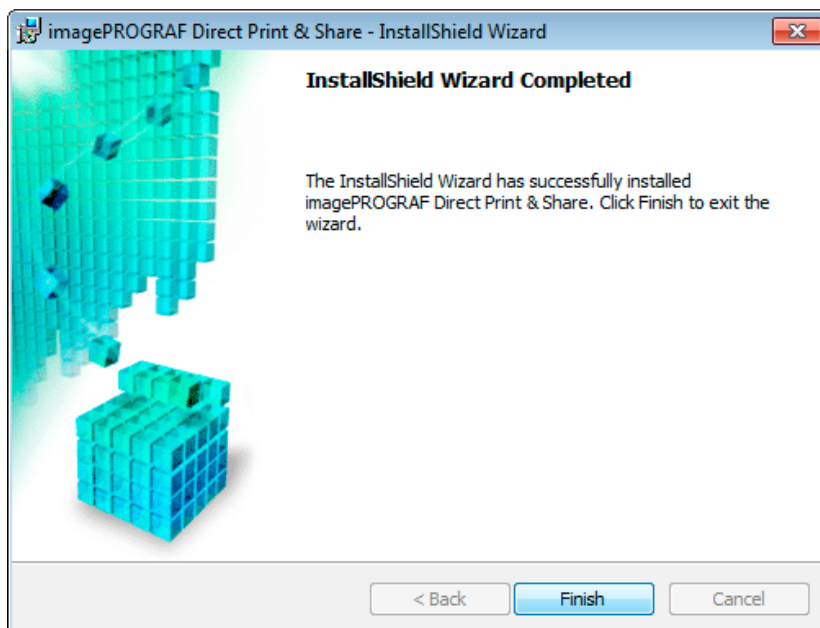


6. Click the **Install** button.



The installation begins.

7. Click the **Finish** button.



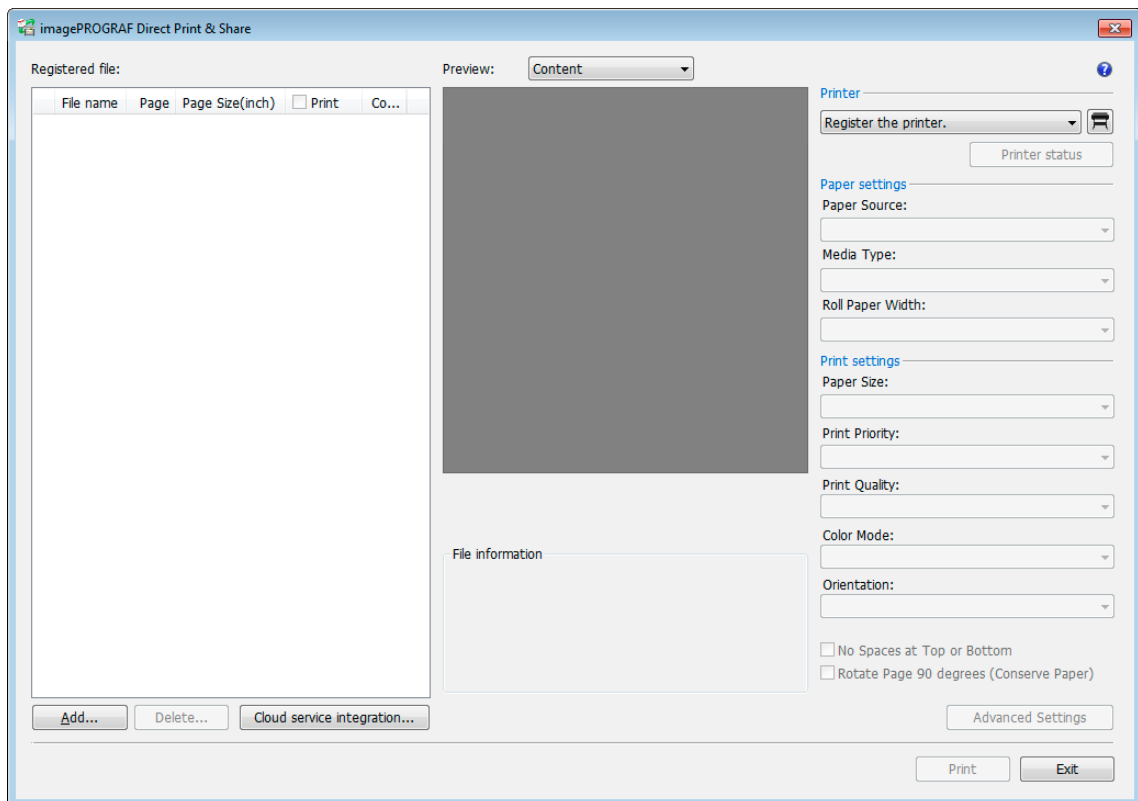
This completes the installation of Direct Print & Share.

3. Printing

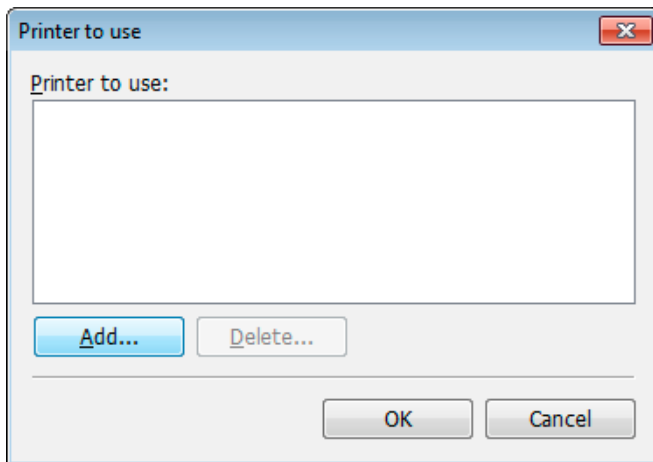
3.1 REGISTERING THE PRINTERS TO USE

Printers to be used in Direct Print & Share must be registered in the **Printer** pull-down menu. To add a printer to the **Printer** pull-down menu, follow these steps.

1. Click the  button in the main window.

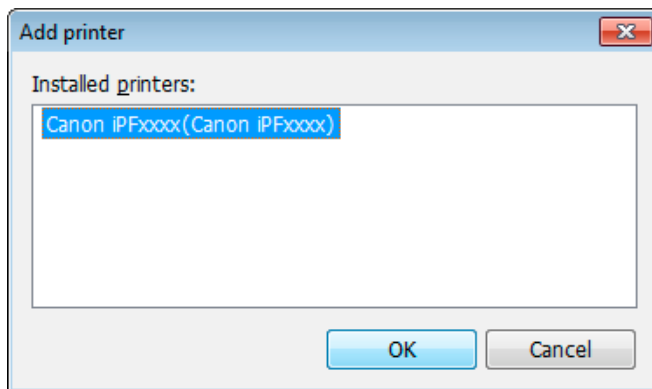


2. The **Printer to use** dialog box is displayed. Click the **Add** button.

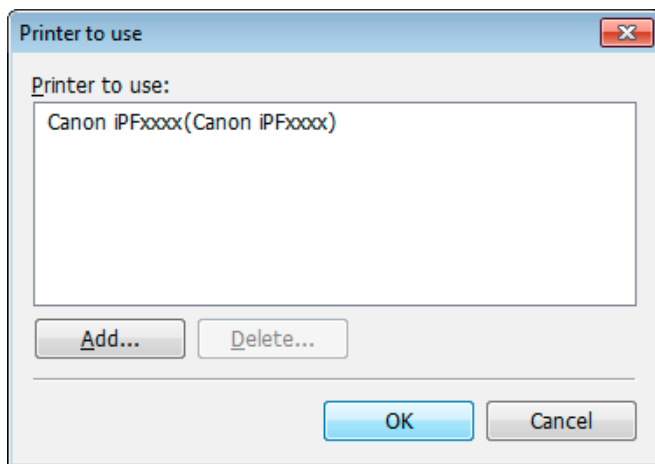


3. The **Add printer** dialog box is displayed.

Select the printer you want to add from **Installed printers** and click the **OK** button.



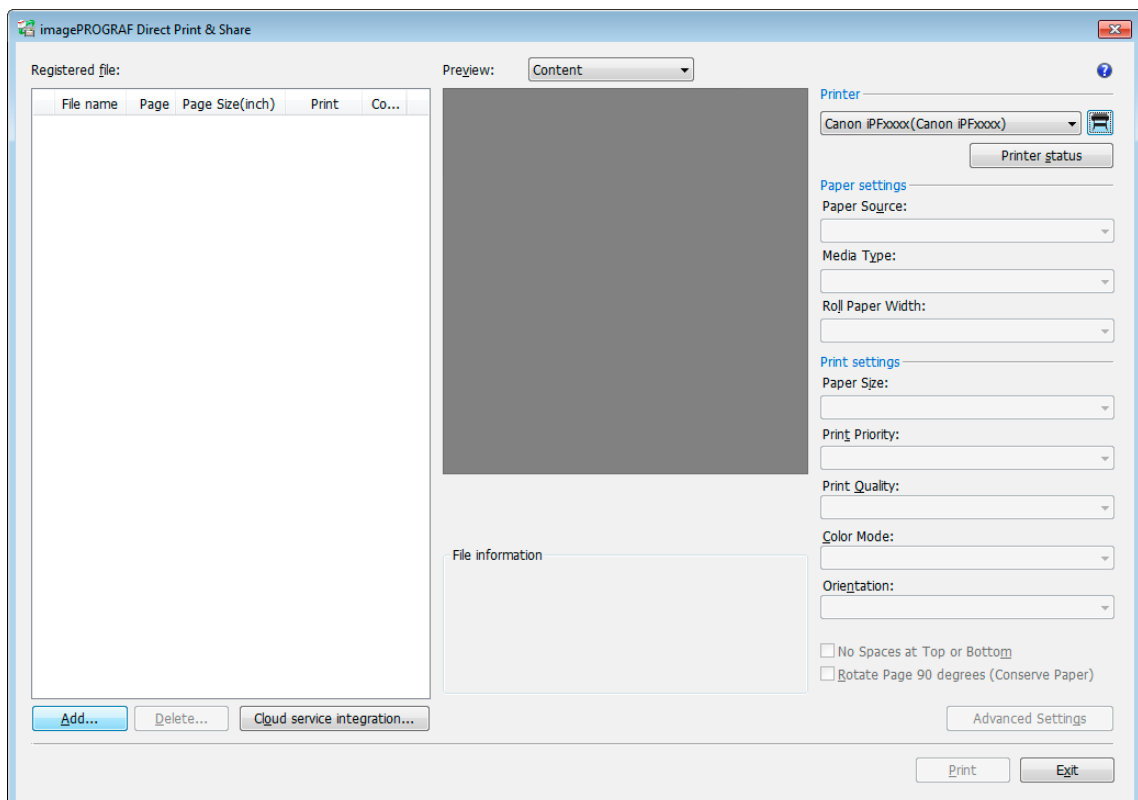
- The printer drivers installed in your computer will be displayed in **Installed printers**. If you want to add a printer to **Installed printers**, install the desired printer's printer drivers on the computer you are using.
4. Make sure that the printer you selected in the **Printer to use** dialog box has been added, and then click the **OK** button.



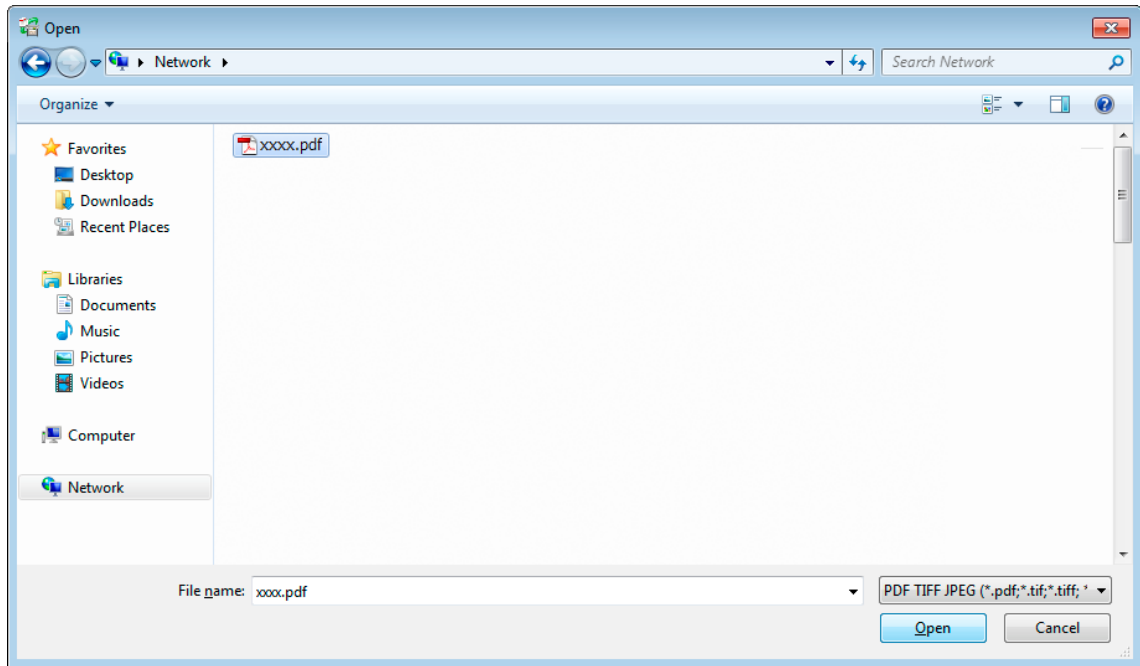
The printer will be added to the **Printer** pull-down menu.

3.2 Printing

1. Click the **Add** button in the main window.



2. Select the file you want to print and click the **Open** button.

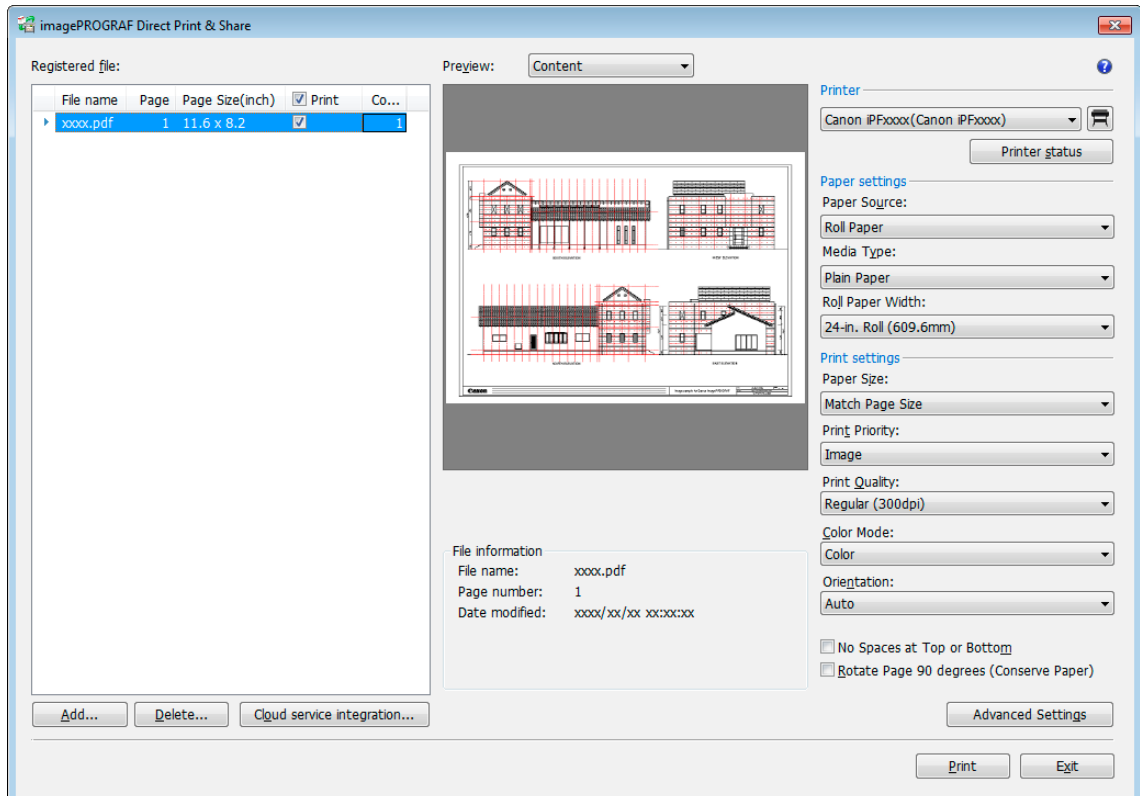


The file is added to the **Registered file** list.

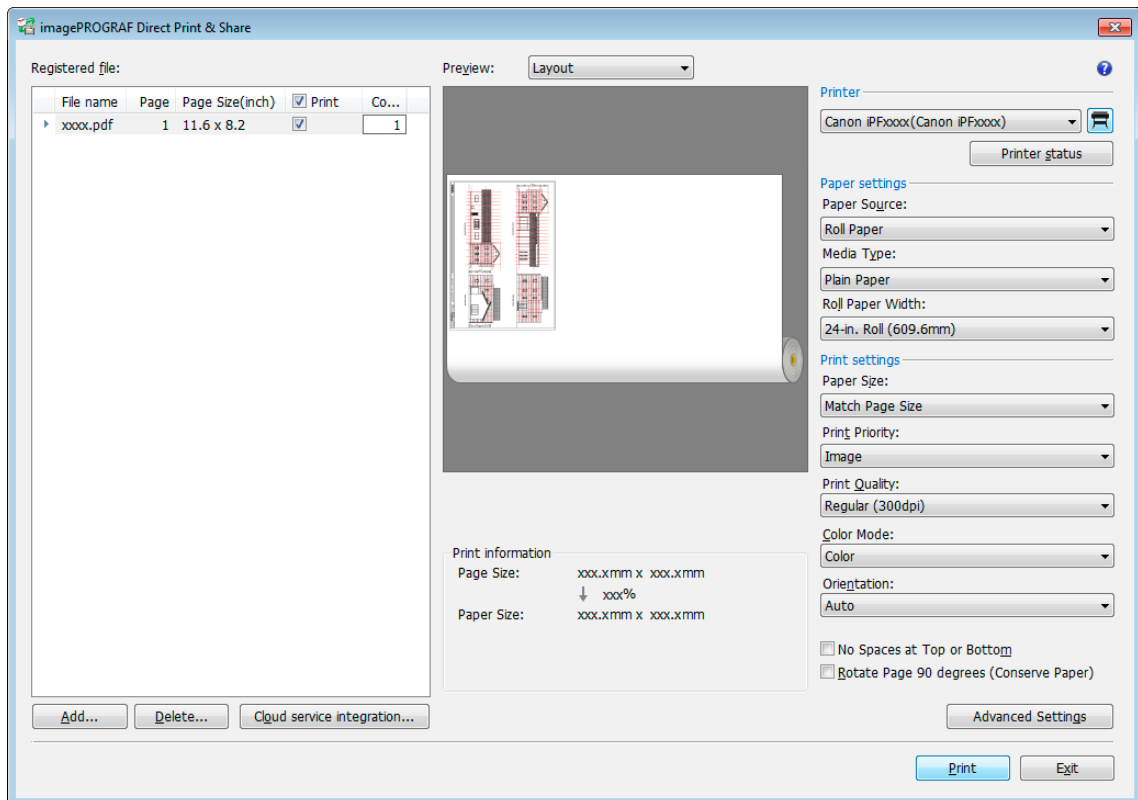
3. Select the file you want to print in the **Registered file** list.

A preview of that file is displayed in the preview area.

By selecting a **Layout** in the **Preview**, you can preview what the file layout will look like on paper and page size, paper size, output resolution, etc. will be displayed in **Print information**.



4. Configure settings such as the paper source and print quality as needed in the printer settings area on the right side of the main window.
5. Turn on the **Print** check boxes for the files you want to print in the **Registered file** list of the main window. Enter the number of copies of each file to print and click the **Print** button.



Printing begins.

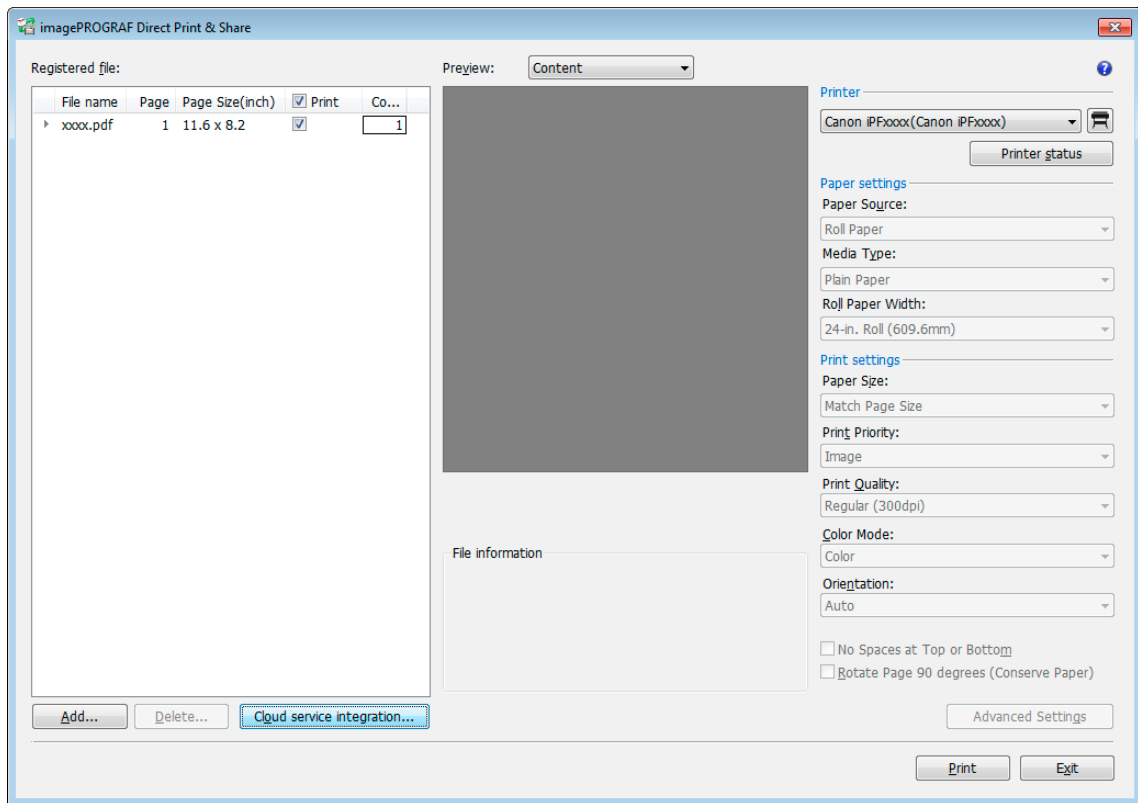
4. Using the Cloud Storage

4.1 Log into the cloud service

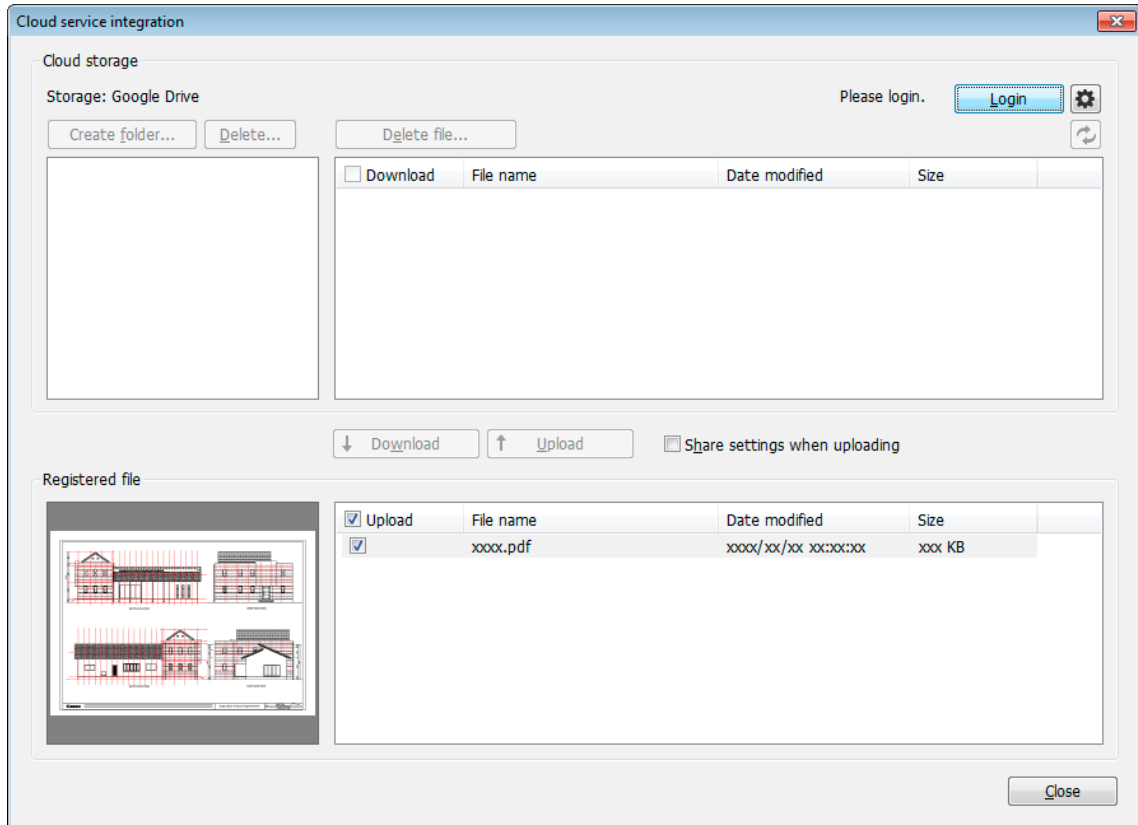
In order to start downloading from or uploading to cloud storage, you must be logged into the cloud service.

You first have to create an account for the cloud service (Google Drive). Check that you can log into the cloud service using a web browser with the account you created.

1. Click the **Cloud service integration** button in the main window.

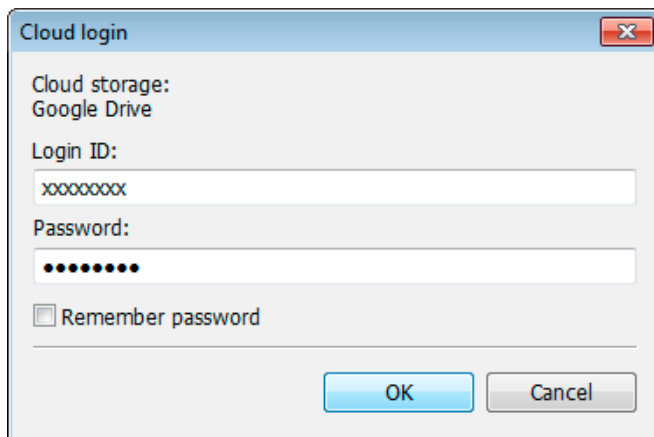


2. The **Cloud service integration** dialog box is displayed.
Click the **Login** button.



3. The **Cloud login** dialog box is displayed.

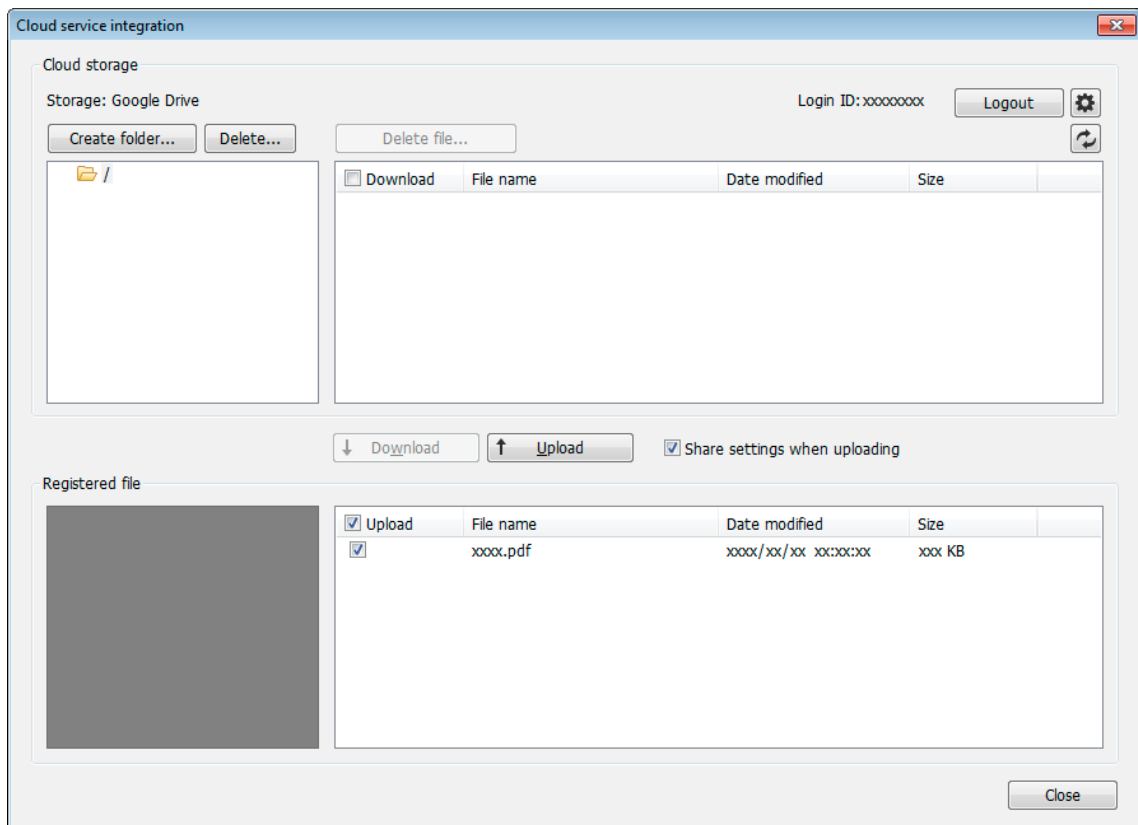
Enter your account login ID and password for cloud service that is displayed in **Cloud storage**, and then click the **OK** button.



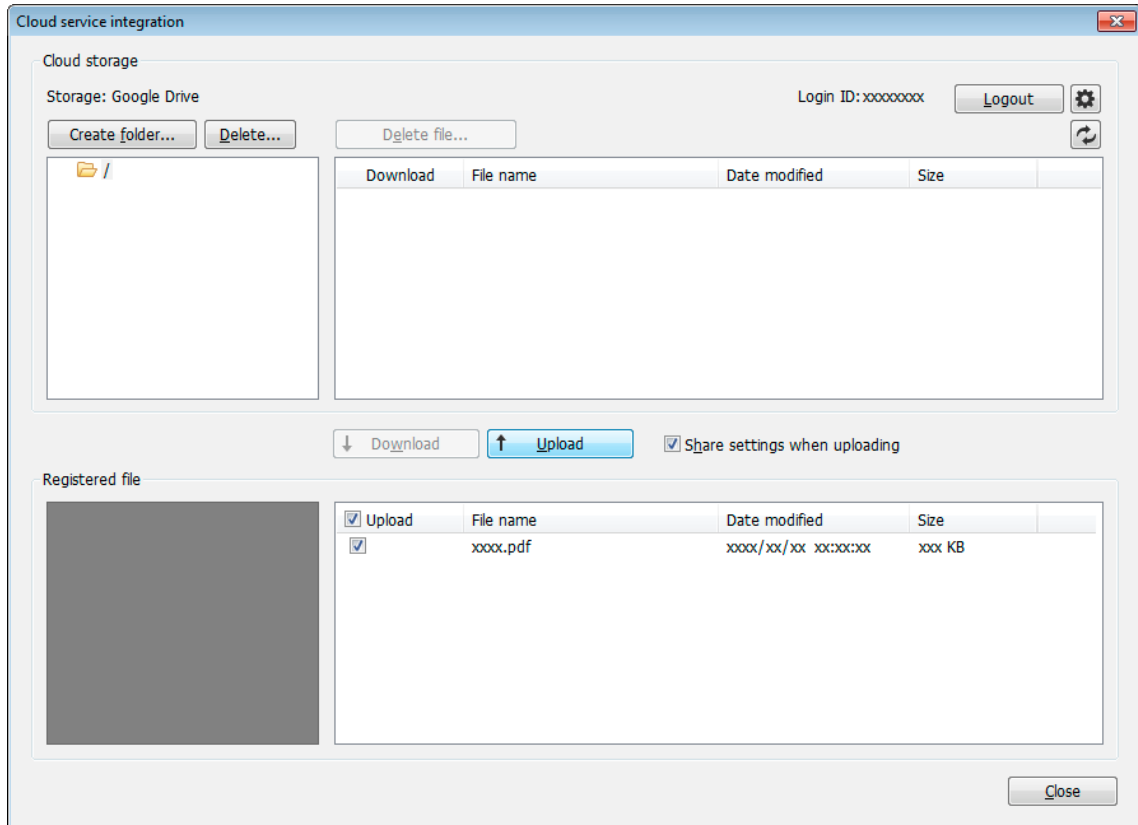
Once you have logged in, the **Login** button changes to the **Logout** button and your login ID is displayed next to the button.

4.2 Upload files to cloud storage

1. If the files you want to upload to cloud storage are displayed in **Registered file** in the **Cloud service integration** dialog box, proceed to step 4.
If they are not displayed, click the **Close** button to close the **Cloud service integration** dialog box.
2. Click the **Add** button in the main window and add the files you want to upload to the cloud storage to the **Registered file** list.
3. Click the **Cloud service integration** button to open the **Cloud service integration** dialog box.
Check that the files you want to upload are displayed in **Registered file**.
4. If you intend to upload a file to share it with other users, turn on the **Share settings when uploading** check box.

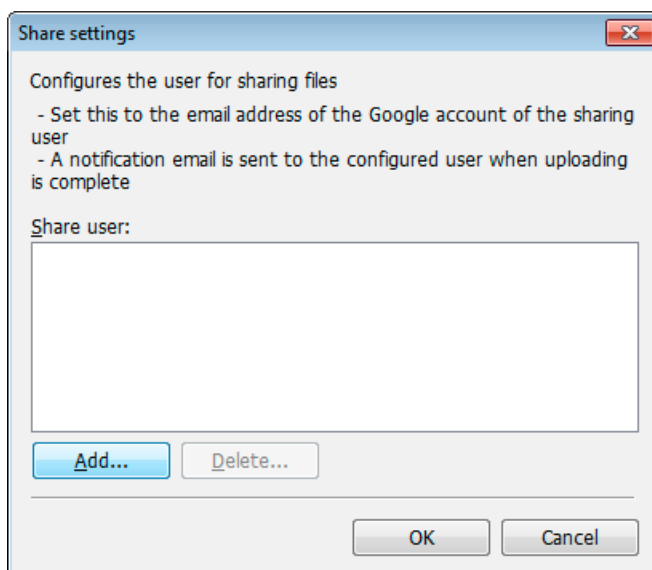


5. Turn on the **Upload** check box for the file you want to upload and click the **Upload** button.



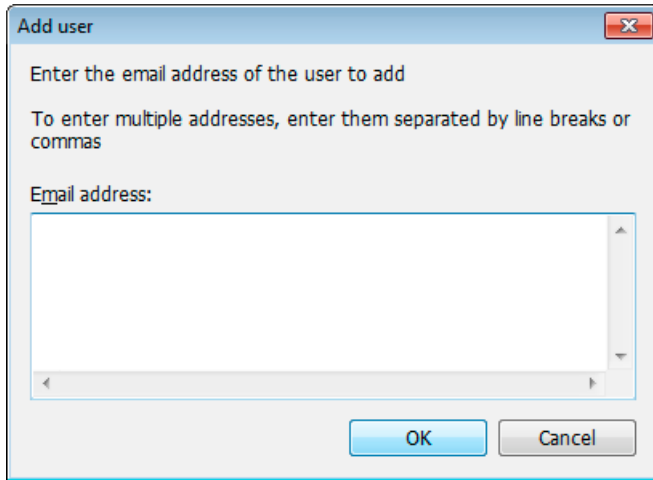
6. If the **Share settings when uploading** check box is turned on, the **Share settings** dialog box will be displayed.

Register users with whom you want to share file uploads to the **Share user** list. If you want to add a user, click the **Add** button.



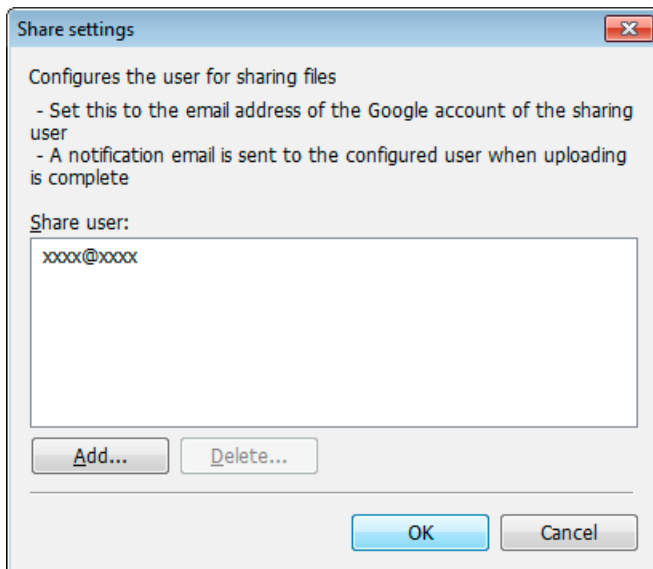
-
7. The **Add user** dialog box will be displayed.

Enter the Google account e-mail address for the user with whom you want to share files.



8. The added e-mail addresses will be displayed in the **Share user** list of the **Share settings** dialog box.

Click the **OK** button.



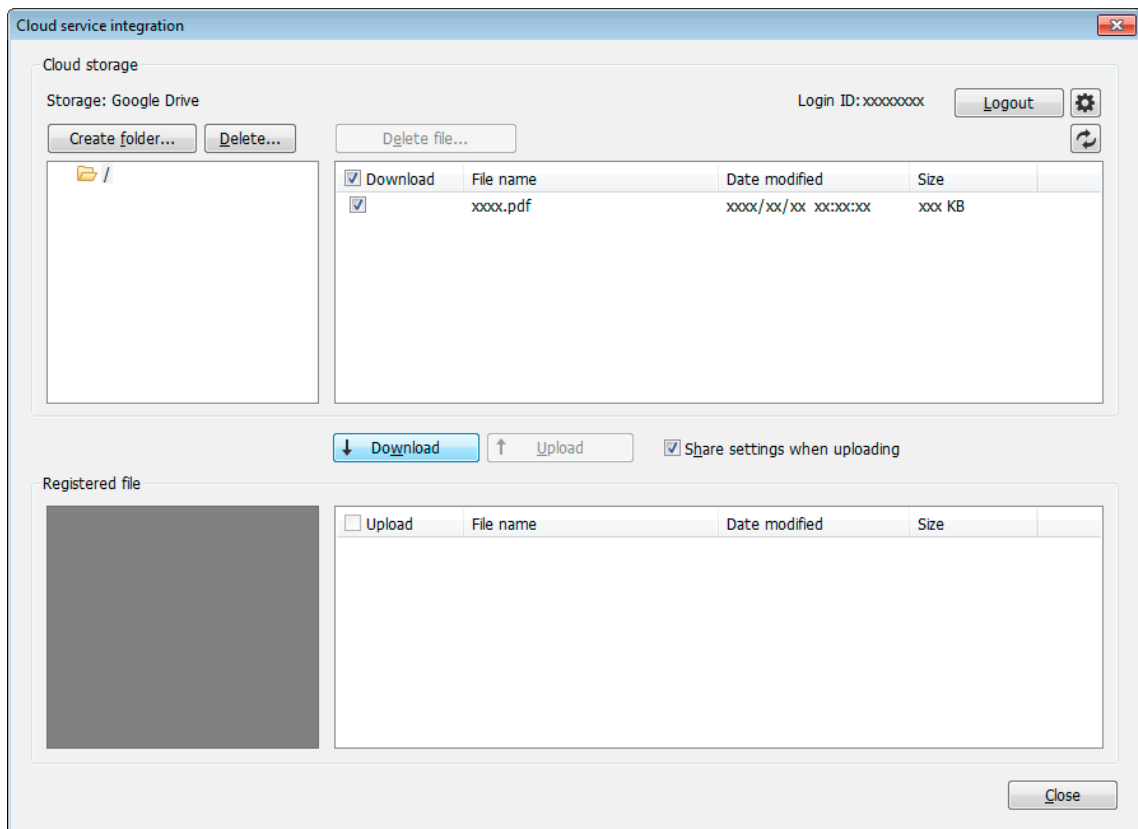
The **Upload** dialog box will be displayed and your uploads will begin.

When uploading completes, e-mail notification will be sent to set users.

4.3 Download files from cloud storage

1. Turn on the **Download** check box for the file you want to download from **Cloud storage**.

2. Click the **Download** button.



The **Download** dialog box will be displayed and your downloads will begin.

When downloading completes, the files you downloaded will be added to the **Registered file** list.

Downloaded files can be printed from the main window.

5. Print from AutoCAD

If you install Direct Print & Share on a computer that has Autodesk's CAD software AutoCAD installed on it, a Direct Print & Share plug-in will be added to AutoCAD.

You can start Direct Print & Share from AutoCAD and easily print drawings and make uploads to cloud storage.

- You can use the AutoCAD plug-in with AutoCAD 2008 and later versions of AutoCAD.

1. Open a drawing in AutoCAD.

- Open AutoCAD's **Layout** space. The AutoCAD plug-in cannot be used from the **Model** space.

-
2. Click **Print and Preview** from either AutoCAD's ribbon menu or by right clicking and selecting it from the displayed menu.
 3. The Direct Print & Share will start after the PDF files that reflect the layout of open drawings are generated.
 - If you want to change the layout of a PDF file, change the layout of the drawing in AutoCAD and then click **Print and Preview** again.
 4. Confirm that the PDF file that was generated from the AutoCAD drawing is displayed in the **Registered file** list of the Direct Print & Share's main window.

The generated PDF files can be printed and uploaded to cloud storage.

<Trademarks>

- Canon and imagePROGRAF are trademarks or registered trademarks of Canon Inc.
- Microsoft and Windows are either registered trademarks or trademarks of Microsoft Corporation in the United States and/or other countries.
- Google, Google Drive and Google Apps are trademarks of Google Inc.
- AutoCAD and other Autodesk product names are trademarks or registered trademarks of Autodesk, Inc. in the United States and other countries.