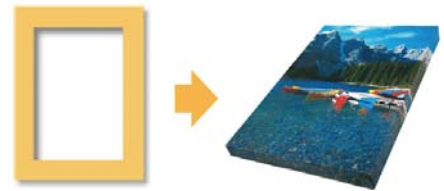
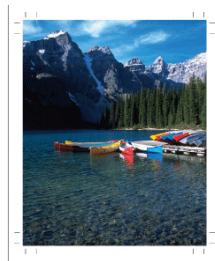
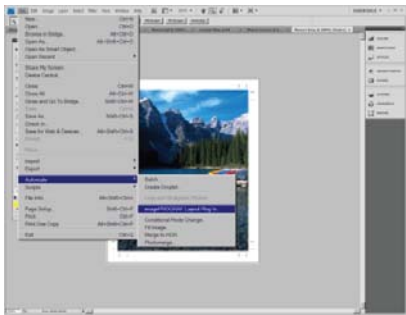


imagePROGRAF Gallery Wrap Feature

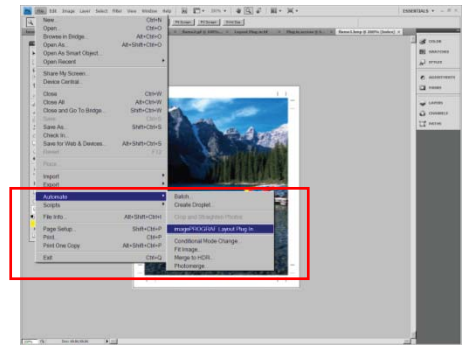
Create Stunning Gallery Wraps

The imagePROGRAF Gallery Wrap Feature allows you to easily create a layout for canvas gallery wraps. Gallery wrap is a method of mounting a photo in a canvas (a wooden or metal canvas for mounting a printed photo) that finishes the photo by printing the photo larger than the canvas size and extending the image to the side edges of the canvas.



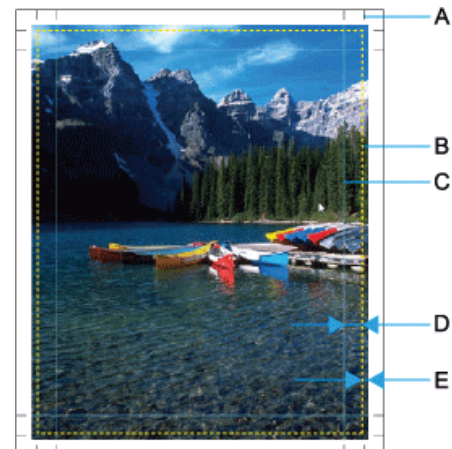
How to Access the Gallery Wrap Feature

- Open the file in Adobe Photoshop.*
- Select File and scroll down to Automate.
- Select the imagePROGRAF Layout Plug-in and Click!



The Plug-in creates a layout for your file which includes:

- Crop Marks- Lines as a guide for folding the paper in preparation for mounting.
- Edge Lines- Where the area outside these lines is the area that gets folded around to the back of the canvas.
- Blue Lines- Signify the areas that appear on the front surface of the canvas when mounted.
- Canvas Thickness- Area which becomes the sides of the canvas when mounted.
- Extension Amount- Area that is printed on and extends out in order to prevent white areas from appearing on the sides of the canvas.



* Adobe Photoshop Required and Not Included

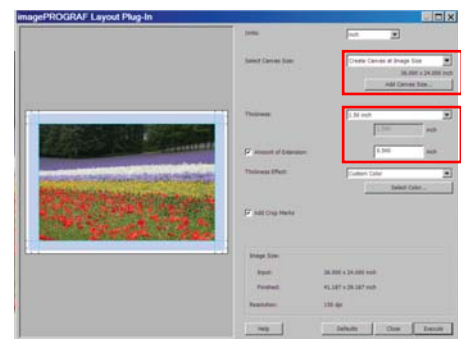
The Gallery Wrap Feature has a variety of creative tools to help expand the output possibilities. Choose the effect you would like to see on the canvas before you have it wrapped around the frame. Some of the options found in this software solution are:

- Image- Wraps the image to the canvas sides.
- Soft Image- Performs Gaussian filtering on the image on the canvas sides.
- Reflection- Reflects the image on the canvas sides.
- Soft Reflection- Reflects the image on the canvas sides and performs Gaussian filtering.
- White, Black or Color Makes the canvas sides white, Black or a custom color

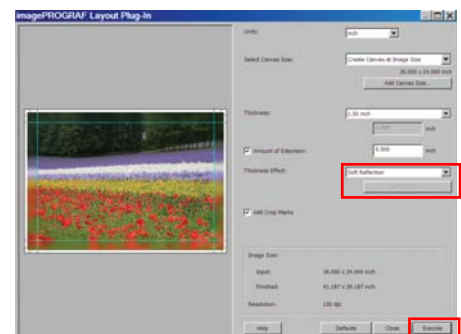


How to Use the Gallery Wrap Feature:

- 1) Select from a variety of different canvas sizes, or input a custom size.
- 2) Input the border thickness desired to appear around the image.
- 3) Select the thickness effect that will appear around the image. Options included are:
 - Image
 - Soft Image
 - Reflection
 - Soft Reflection
 - White
 - Black
 - Custom Color
- 4) Execute and Print!



1
2



3
4